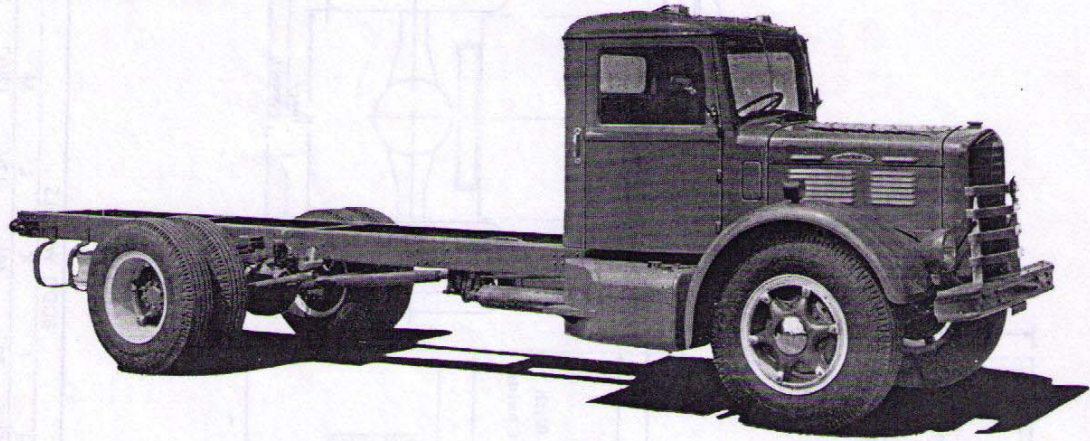




# BROCKWAY TRUCKS



## MODEL 147WL SPECIFICATIONS

GROSS VEHICLE WEIGHT — Chassis, Body and Payload - 28,000 lbs.

**AXLE, FRONT** — Timken 32550, I-Beam section, drop forged alloy steel, heat treated for maximum strength. Track 68". Capacity on the tires 7,000 lbs.

**AXLE, REAR** — Timken QT-140, Single-speed, full floating type. Capacity on the tires 22,000 lbs. Gear Ratios - 6.83 or 7.8 to 1.  
Available Rear Axles

Eaton 18802, Two-speed, full floating type.

Gear Ratios - 6.53/8.87 to 1.

Timken QT-240, Double Reduction, full floating type.

Gear Ratios - 7.21 or 8.52 to 1.

NOTE - the above Front and Rear Axle Ratings are nominal and subject to operating conditions.

**BRAKES, SERVICE** — Hydraulic with Hydrovac. Timken front brake size 16" dia. x 2 1/4". Timken rear brake size 16 1/2" dia. x 6". Total brake lining area 547 sq. in. Eaton rear brake size 16" dia. x 6". Total brake lining area (with Eaton rear) 536.8 sq. in. Air brakes available.

**BRAKE, HAND** — 3" brake band on 10" dia. drum operating on propeller shaft. Lining area 94.25 sq. in.

**BUMPER, FRONT** — Pressed steel channel, 6" section.

**CAB** — Brockway Model 41G, with adjustable driver's seat. Air wing vents in doors. Two windshield wipers. Two rear vision mirrors. Two deck marker lights, three deck identification lights, dash light and dome light. Equipped with safety glass throughout.

**CLUTCH** — Lipe-Rollway 13" single dry disc. Effective lining area 178 sq. in.

**COOLING SYSTEM** — Finned tube radiator - total water capacity 26 qts. Four blade fan, 20" diameter, driven by V-belt.

**DRIVE LINE** — Tubular shafts with Spicer Model 1500 needle bearing universal joints. Mounted on self-aligning ball bearings.

**ELECTRICAL** — Battery 6 volt, 17 plate, 120 amp. hr. rating. Generator 6 volt, 32 amp. output. Voltage and current regulator. Starting motor with foot switch. Parking lights, two stop and tail lights. Sealed beam head lights with foot switch beam control. Dual electric horns. Front and rear turn signals.

**ENGINE** — Brockway-Continental Model 41-BD. Six cylinders L-head type. Displacement 363 cu. in. Bore and Stroke 4" x 4 1/8". Maximum Gross Brake Horsepower 150 @ 3200 R.P.M. Maximum Gross Torque 293 ft. lb. @ 1600 R.P.M. Compression ratio 6.7 to 1. Carburetor 1 1/4" Duplex (downdraft). Intake manifold individually ported. Air Cleaner. Pressure lubrication. Crankcase oil capacity 7 qts. Oil filter with replaceable element. Governor velocity type, set at 3000 R.P.M.

**FRAME** — Chrome manganese steel, heat treated channel. Side rail section 8 1/8" x 3 1/8" x 5/16". Section Modulus 9.9 each rail.

**FUEL TANK** — One 44 gallon step tank on right hand side.

**SPRINGS** — Front 11 leaves, 40" x 2 1/2". Rear, main 11 leaves, 54" x 3", auxiliary 8 leaves, 34" x 3". Radius Rod Drive.

**STEERING** — Ross TA66, cam and double lever type. Ratio 23.4 - 19.5 - 23.4 to 1. Diameter of steering wheel 20".

**TRANSMISSION** — Fuller, five speeds forward and one reverse.

	Overdrive Model 5B330	or	Direct in 5th Model 5B33
Reduction in first gear	6.10 to 1		7.53 to 1
Reduction in second gear	3.48 to 1		4.30 to 1
Reduction in third gear	1.795 to 1		2.52 to 1
Reduction in fourth gear	1.00 to 1		1.42 to 1
Reduction in fifth gear	0.768 to 1		1.00 to 1
Reduction in reverse gear	5.96 to 1		7.37 to 1

**WHEELS & TIRES** — Four cast spoke wheels and seven 7.00 rims. Standard - six 9.00-20, 10 p.r. tires and tubes. Available - six 10.00-20, 12 p.r. tires and tubes. Optional - six Budd disc wheels, 10 stud.

**WHEELBASE** — Standard 181 1/2". Back of cab to center of rear axle 115". For longer or shorter wheelbases see chart on reverse side.

**STANDARD EQUIPMENT** — Crown front fenders, short running board on left hand side, front tow hooks, radiator guard, hydraulic jack, grease gun, speedometer, oil gauge, gasoline gauge, ammeter and heat indicator.

As we are constantly striving to improve Brockway Trucks, we reserve the right to change specifications and prices without notice.

# BROCKWAY THE RIGHT WAY